

LPI INCORPORATED

THE RECOGNIZED INDUSTRY LEADER OF
PERSONNEL LIFTS AND WORK PLATFORMS

Standard & Custom Designed SCISSOR LIFTS & WORK PLATFORMS



Paint Finishing

Manufacturing

Maintenance

Material Handling

Hazardous Location

HEAVY DUTY
TABLES/PLATFORMS

STATIONARY

RAIL GUIDED

CURVED RAIL

STEERABLE/
DRIVABLE

DUAL DRIVE

LPI[®]
LIFT SYSTEMS

800 Wisconsin Street
Mailbox 10
Eau Claire, WI 54703
Toll Free: (800) 657-6956
Fax: (715) 839-8647
Web: www.lpi-inc.com
E-Mail: sales@lpi-inc.com

AIR/HYDRAULIC SCISSOR LIFTS

COMPACT, PNEUMATIC ELEVATING WORK TABLES/PLATFORMS

LPI Inc. has introduced a **NEW** work platform/worktable for light or medium duty applications.

The EWP-4 personnel lift is ideal for areas with limited space. This compact, economical, air operated scissor lift provides a safer alternative to ladders or scaffold and is an ideal solution for paint booths as narrow as 14 ft. or other hazardous environments. The unit features a space saving lightweight design, including a 20" wide deck, with a non-slip floor surface. The platform has a lowered height of 10" and a maximum raised height of 46", providing a working height of approximately 10 ft.

The unit is also available as a worktable, EWT-4, providing a 20 X 66" work surface and up to 1000 lb. load capacity. Both the work platform and worktable are equipped with air controls for safe and easy operation.

INCREASED SAFETY

- Reduces fatigue and minimizes excessive movement associated with manual lifting.

AFFORDABLE

- Operates off compressed air source (not included), requires 8 SCFM at 100 psi.

OPTIONS AVAILABLE

- 203-0903: Caster Kit
- 203-0904: Bolt Down Kit
- 203-0905: T-Bar Transport Kit
- 203-0906: Access Ramp Kit
- 960-0097-06000: Non-Slip Surface: EWT-4 (Standard on EWP-4)
- 222-5759: Bumpers

APPLICATIONS

- Maintenance
- Material Handling
- Manufacturing
- Paint Booth

LIFT TRAVEL SPEED

Up: 5 F.P.M.
Down: 15 F.P.M.

SPECIAL OPTIONS

- Call for details on:
- Rail guided systems



CASTER KIT AND T-BAR TRANSPORT OPTIONS



203-0903: Caster Kit



203-0905: T-Bar Transport Kit

MODEL #	MAX. WORKING HEIGHT	RAISED FLOOR HEIGHT	LOWERED FLOOR HEIGHT	PLAT-FORM LENGTH	PLAT-FORM WIDTH	PLAT-FORM CAPACITY	OVERALL LENGTH	OVERALL WIDTH	SHIPPING WEIGHT
EWT-4	10'	46"	10"	66"	20"	1000#	66"	20"	330
EWP-4	10'	46"	10"	66"	20"	500#	66"	25"	380

All work platforms, unless indicated otherwise, are slab type machines and should only be raised on hard, flat, level surfaces.

View our website - www.lpi-inc.com for more information on the Elevating Work Table or any of our other products. Our engineers will work closely with you to develop a system designed specifically to your application.



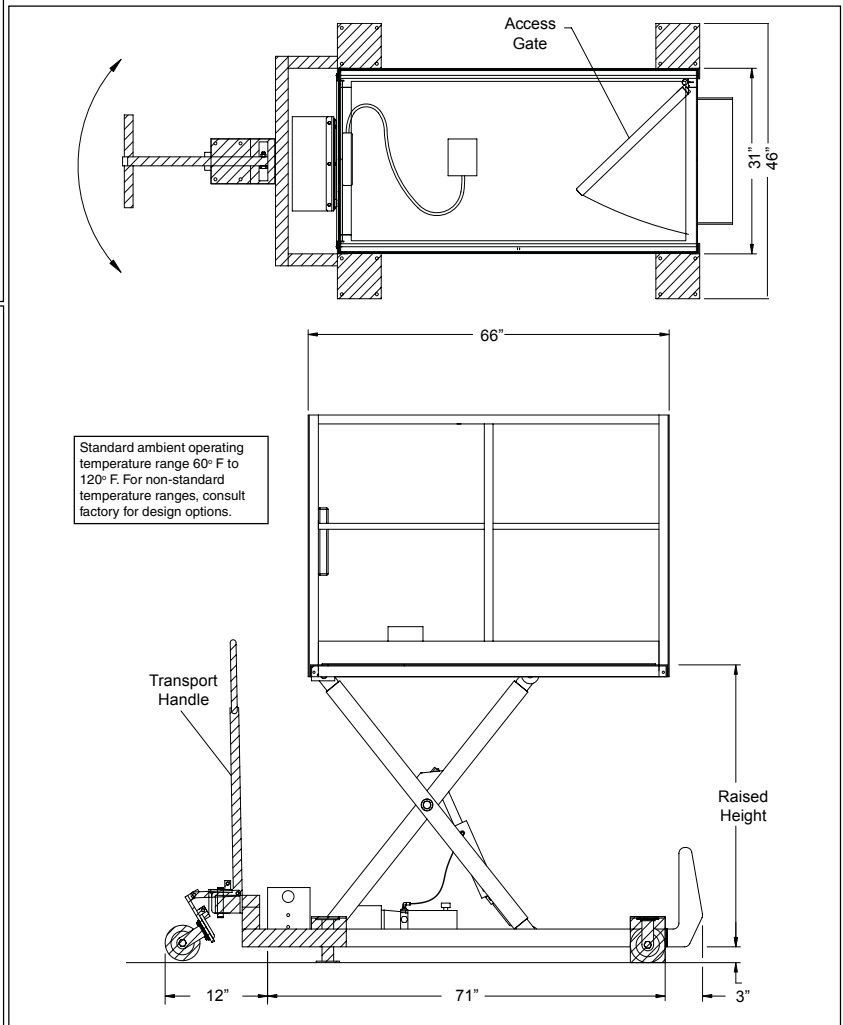
LPI® is a registered trademark of LPI, Inc. 2004

AIR/HYDRAULIC SCISSOR LIFTS

STATIONARY/MANUALLY PROPELLED



- Pneumatic/hydraulic power. Safe for use in paint booths and other hazardous locations.
- AC and DC power options.
- Minimal installation - quick and easy connection to air source, 1/2" NPT
- Available in manually positioned roll-around (Model LPSMT) or stationary version (Model LPSM).
- Approx. 15 F.P.M. lift speed.
- Custom product conversion available upon request.



ALL MODELS INCLUDE

- Fixed hand control with Emergency Stop
- 42" high guard rail with a self-closing gate
- Filter/Regulator/Lubricator
- OSHA approved shut off/lockout valve
- Velocity check valve to prevent descent of platform if there is a hose rupture or loss of system pressure
- 3/8" NPT auxiliary air supply in operator platform
- Lift cylinder rod cover to prevent overspray buildup
- Operator platform capacity 500#.
- 15 F.P.M. Lift Speed.
- Unit requires clean dry air supply of 50 SCFM at 100 PSI.
- Pneumatic/hydraulic power, inherently safe in painting/finishing atmospheres.
- Minimal installation - Quick and easy connection to air source, 1/2" NPT.

OPTIONAL

Foot control for vertical travel P/N 203-0259
 Accordion bellows (not available on LPSMT models).
 (LPSM-48) P/N 222-5091-48
 (LPSM-96) P/N 222-5091-96
 (LPSM-144) P/N 222-5091-144

MODEL #	MAX. WORKING HEIGHT	RAISED FLOOR HEIGHT	LOWERED FLOOR HEIGHT	PLAT-FORM LENGTH	PLAT-FORM WIDTH	OVERALL LENGTH	OVERALL WIDTH	SHIPPING WEIGHT
LPSM-48*	121"	49"	10½"	66"	31"	74"	31"	750
LPSM-96*	164"	92"	16"	66"	31"	74"	31"	950
LPSM-144*	212"	140"	18"	66"	31"	74"	31"	1250
LPSMT-48	124"	52"	13½"	66"	31"	86"	46"	800
LPSMT-96	167"	95"	19"	66"	31"	86"	46"	1000
LPSMT-144	215"	143"	21"	66"	31"	86"	46"	1300

LPSMT Models Include:

An easy to use Transport Handle Kit (components shaded in gray) for mobility and positioning between work areas. Transport Handle Kit includes: 6" rigid casters and a pull-down handle with retractable steering wheel for maneuverability. Also included is a safety switch to prevent the operator platform from being raised with transport handle in "transport" position.

*Unit must be bolted to floor

SLAB TYPE MACHINE SHOULD ONLY BE RAISED ON A HARD FLAT LEVEL SURFACE.

• All models meet applicable OSHA/ANSI Standards as interpreted by LPI, Inc. •

AIR/HYDRAULIC SCISSOR LIFTS

RAIL GUIDED SYSTEM



DESIGNED FOR APPLICATIONS WHERE 3-AXIS TRAVEL IS NOT REQUIRED AND EXISTING SPRAY BOOTHS LACK STRUCTURAL INTEGRITY

- Rail guided X-axis travel allows the operator to concentrate on the task at hand rather than steering around obstacles.
- Pneumatic power source makes lift safe for use in paint booths and other hazardous locations. Unit requires 100 PSI at 50 SCFM.
- Controls - Platform controls consist of a self-centering hand valve for vertical travel at a rate of 15 FPM and a self-centering foot control for X-axis travel at a variable rate of up to 40 FPM.
- Economical R.O.I. - Increases worker productivity and safety while decreasing workers' compensation costs due to falls and other injuries.
- Custom product conversions available upon request.

ALL MODELS INCLUDE:

- OSHA-Approved shut off/lockout valve
- Filter regulator lubricator
- Auxiliary air supply in operator platform
- Holding valves to prevent descent of lift if hydraulic system fails
- Emergency stop
- Z-Axis ground level control station
- Lift cylinder protected to prevent overspray buildup
- 12 ft. raised platform height provides safe product access in booths up to 20 ft. high.

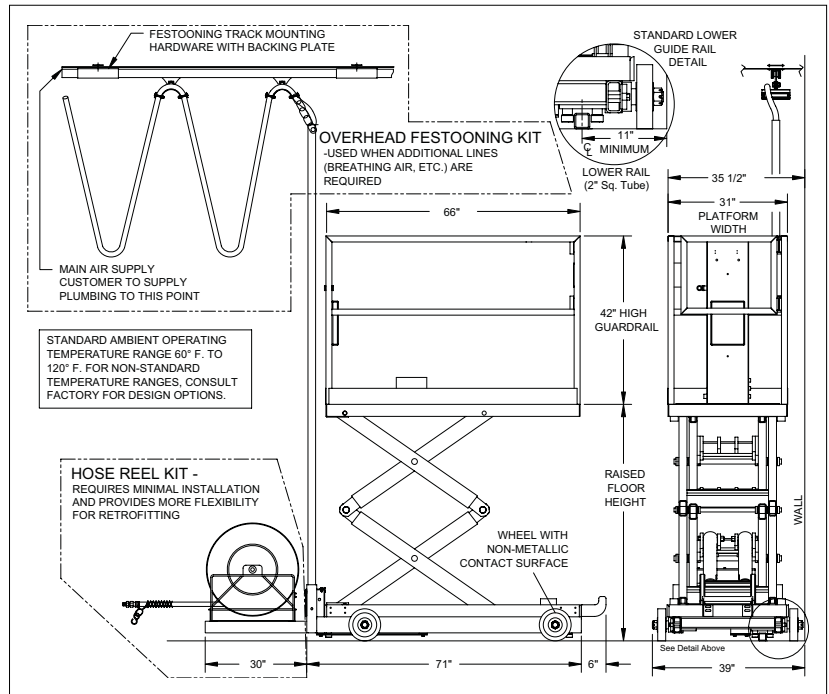
FOR LIFT AIR SUPPLY, ORDER HOSE REEL KIT OR OVERHEAD FESTOONING KIT (BOTH ARE DISPLAYED IN DRAWING)

HOSE REEL KIT (P/N LPST-60-HRK)

An economical method of providing air supply to the unit in applications where breathing air or additional process lines are not required. Lift's main air supply line is carried by a self-retracting hose reel.

Kit Includes:

- Guide Rail for Mounting to Concrete Floor with Hardware and Rail Stops.
- Hose Reel Assembly, Main Air Supply Hose, Hose Support Grip, and Mounting Hardware.



- OR -

OVERHEAD FESTOONING KIT

Ideal for installations requiring multiple process lines into unit. Lift's main air supply is festooned from end of booth with roller trolleys that ride in a track mounted to ceiling of booth.

Kit Includes:

- Guide Rail for Mounting to Concrete Floor with Hardware and Rail Stops.
- Overhead Festooning System with Trolleys, Main Air Supply Hose, Hose Support Grip, and Mounting Hardware. System capable of carrying 2 additional lines, supplied by customer, up to 3/4" I.D. for breathing air and paint line or auxiliary air line for paint equipment.

SPACE REQUIRED FOR FESTOONING SYSTEM IN STORED POSITION

PART NUMBER	BOOTH LENGTH	STORAGE SPACE	APPROX. # CARRIERS
LPST-60-IK	0-60 Ft.	2'	3
LPST-90-IK	60-90 Ft.	3'6"	5
LPST-120-IK	90-120 Ft.	5'	7

Storage space based on 16' high booth. Higher booths would require fewer carriers, making storage space less. Consult factory for options if booth length is a concern.

MODEL NUMBER	MAXIMUM WORKING HEIGHT	MAXIMUM PLATFORM HEIGHT	LOWERED FLOOR HEIGHT	OVERALL LOWERED HEIGHT	OVERALL WIDTH	PLATFORM LENGTH	PLATFORM WIDTH	PLATFORM CAPACITY	SHIPPING WEIGHT
LPST-48	125"	53"	14 1/2"	56 1/2"	39"	66"	31"	500 Lbs.	1200 Lbs.
LPST-96	168"	96"	22"	64"	39"	66"	31"	500 Lbs.	1400 Lbs.
LPST-144	216"	144"	24"	66"	39"	66"	31"	500 Lbs.	1700 Lbs.

Note: Model selected should not exceed the inside height of the booth. For calculation take the raised floor height of the lift plus an additional 7" for personnel.

SLAB TYPE MACHINE SHOULD ONLY BE RAISED ON A HARD FLAT LEVEL SURFACE.

• All models meet applicable OSHA/ANSI Standards as interpreted by LPI, Inc. •

LPI® is a registered trademark of LPI, Inc. 2004

AIR/HYDRAULIC SCISSOR LIFTS

CURVED RAIL SYSTEM



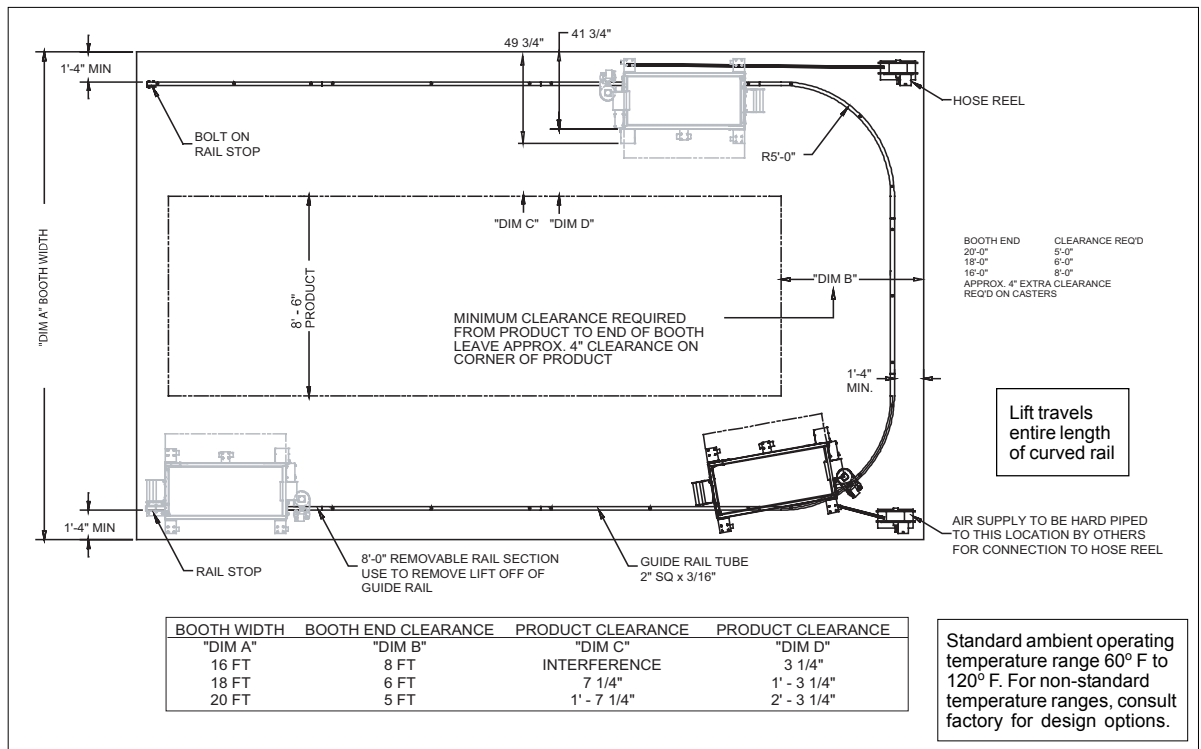
- New curved guide rail maximizes use of lift - one unit services both sides and one end of product. Unit designed to be used for the application of dryfall coatings only. For applications using other coatings, consult factory.
- Pneumatic power source makes lift safe for use in paint booths and other hazardous locations. Unit requires 100 PSI at 50 SCFM.
- 16 in. side shifting operator platform allows operator to adjust position for varying size products.
- Foot operated power activation with direct acting hydraulic lever valves for smooth, precise control.
- Economical R.O.I. - Increases worker productivity and safety while decreasing workers' compensation costs due to falls and other injuries.

ALL MODELS INCLUDE:

- OSHA-Approved shut off/lockout valve
- Filter regulator lubricator
- Auxiliary air supply in operator platform
- Holding valves to prevent descent of lift if hydraulic system fails
- Emergency stop
- Z-Axis ground level control station
- Lift cylinder protected to prevent overspray buildup
- Swivel casters with floor brake for use off guiderail
- 12 ft. 8 in. raised platform height provides safe product access in booths up to 20 ft. high.
- Custom product conversions available upon request.

INSTALLATION KIT

(P/N LPSR-60-1K)
Kit includes guide rail, railstops, 2 hose reels with airline and quick disconnects. Rail supplied will accommodate booth up to 22 ft. wide by 60 ft. long. Note: rail must be cut to length in the field and welded and grounded for proper operation. Consult factory for wider or longer applications.



MODEL NUMBER	MAXIMUM WORKING HEIGHT	MAXIMUM PLATFORM HEIGHT	LOWERED FLOOR HEIGHT	OVERALL LOWERED HEIGHT	OVERALL WIDTH	PLATFORM LENGTH	PLATFORM WIDTH	PLATFORM CAPACITY	SHIPPING WEIGHT
LPSR-144R	224"	152"	31"	73"	46"	66"	31"	500 Lbs.	1900 Lbs.

Note: Model selected should not exceed the inside height of the booth. For calculation take the raised floor height of the lift plus an additional 7' for personnel.

SLAB TYPE MACHINE SHOULD ONLY BE RAISED ON A HARD FLAT LEVEL SURFACE.

• All models meet applicable OSHA/ANSI Standards as interpreted by LPI, Inc. •

AIR/HYDRAULIC SCISSOR LIFTS

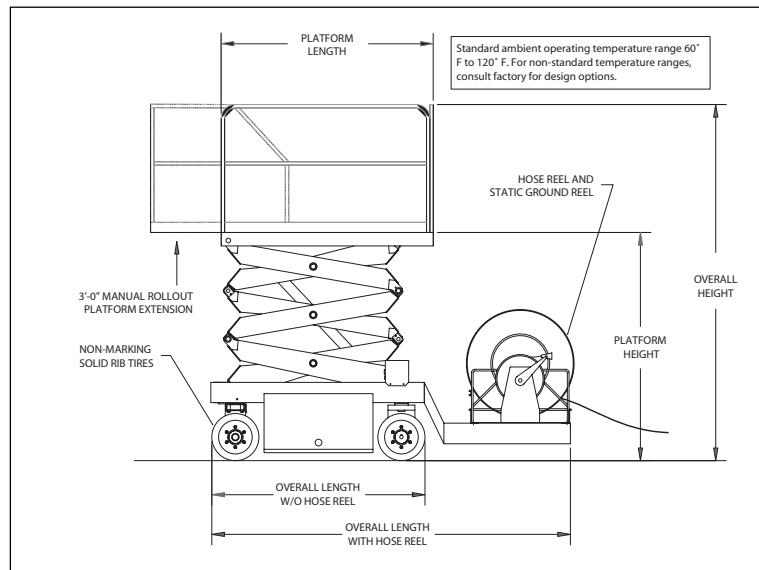
STEERABLE/DRIVABLE



- Controls - Direct acting hydraulics for positive and precise control.
- Steering - Steering is caster type which affords this machine unsurpassed maneuverability. (LPSV-1932 has 6" inside turning radius, LPSV-2646 has 44" inside turning radius).
- Extension Deck - a 3' rollout extension deck. Guardrails are of heavy duty rectangular tubing with a release handle on the guardrail. Rollout capacity 250 lbs.
- Platform - all steel deck has a slip resistant surface and 6" toe boards. Lanyard attachment points front and rear. Heavy duty rectangular tubing is used for the guardrails.
- Scissor Arms - The scissor arms are constructed of heavy duty tubular steel with cross bracing tubes at the ends for through shafts. All pivot points fitted with self-lube bushings. Lift cylinder is equipped with a holding valve.
- Swing out side covers on the base for access to all components.

ALL MODELS INCLUDE

- Pothole Protection - Ground clearance between wheels is reduced to 1/2" to prevent tipping if a wheel should happen to drop into a hole.
- 20 F.P.M. lift speed, 25 F.P.M. lowering speed
- Power source - Compressed air (unit requires clean dry air supply of 80 SCFM at 100 PSI).
Note: Actual air consumption dependent on lift duty cycle.



INSTALLATION KIT • (P/N LPSV-70-1K) INCLUDES

- 70' Hose reel and bracket, for mounting on lift to pay out and pick up air supply hose with minimum hose drag and maximum hose life.
- 50' Static ground reel.

Lift available without installation kit, for connection to air source or hose reel by customer.

NOTE: Hose reel mounted on lift adds to overall length and limits maneuverability to some extent.

MODEL NUMBER	MAXIMUM WORKING HEIGHT	MAXIMUM PLATFORM HEIGHT	LOWERED PLATFORM HEIGHT	OVERALL LOWERED HEIGHT	APPROXIMATE OVERALL LENGTH WITH HOSE REEL	APPROXIMATE OVERALL LENGTH W/O HOSE REEL	OVERALL WIDTH	INSIDE TURNING RADIUS	PLATFORM LENGTH	PLATFORM WIDTH	PLATFORM CAPACITY	SHIPPING WEIGHT
LPSV-1932	25'	19'	39"	79.5"	109.5"	68.5"	32"	6"	64"	31"	500 Lbs.	2,920 Lbs.
LPSV-2646	32'	26'	46"	72"	130"	89"	46"	44"	84"	45"	750 Lbs.	4,680 Lbs.

SLAB TYPE MACHINE SHOULD ONLY BE RAISED ON A HARD FLAT LEVEL SURFACE.

- All models meet applicable OSHA/ANSI Standards as interpreted by LPI, Inc. •

HYDRAULIC SCISSOR LIFTS

DUAL DRIVE

STANDARD & LATERAL DRIVE MODES



Model LPSD-2160 with custom operator platform shown in lateral drive mode.

Improves productivity by providing quick, precise and safe access to large equipment, confined spaces and work areas. Lateral 4 wheel drive allows operator to maneuver into places that standard scissor lifts can't reach.

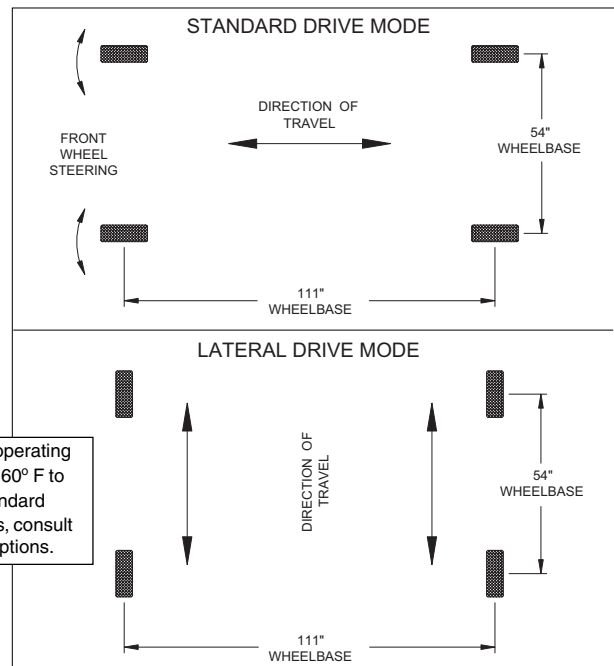
- Standard drive mode uses front wheels to drive and steer for minimum turning radius.
- Lateral drive mode, selected at the flip of a switch, turns all 4-wheels 90° enabling entire unit to travel sideways.
- Power source is 24 volts DC with (8) six volt batteries and automatic 50A charger.
- Operator platform of welded steel construction with 42" guardrails and lanyard tie off points in safety plate floor for operator safety.
- 60 F.P.M. travel speed (fully lowered), 30 F.P.M. travel speed (any raised position in standard drive). 15 F.P.M. travel speed in lateral drive mode.
- 18 F.P.M. lift/lower speed.
- Consult factory for custom requirements.

ALL MODELS INCLUDE

- Upper control station with E-stop and battery condition indicator.
- Lower control station to raise and lower platform from ground for safety and maintenance.
- 24" wide access gate.
- 14" OD x 5" wide solid rubber tires.
- Holding valves on lift cylinders to prevent uncontrolled descent of operator platform in event of hydraulic hose rupture or loss of pressure.
- Hour meter.
- PLC control system for reliability and ease of troubleshooting.

Standard ambient operating temperature range 60° F to 120° F. For non-standard temperature ranges, consult factory for design options.

THESE UNITS ARE ALSO AVAILABLE IN NON-ELECTRIC FULLY PNEUMATIC/HYDRAULIC POWERED VERSIONS FOR USE IN HAZARDOUS ENVIRONMENTS, (COMPRESSED AIR SOURCE NOT INCLUDED). CONSULT FACTORY FOR INFORMATION.



MODEL NUMBER	MAXIMUM WORKING HEIGHT	MAXIMUM FLOOR HEIGHT	MAXIMUM OVERALL HEIGHT RETRACTED	PLATFORM SIZE	OVERALL WIDTH	WHEEL BASE	FULLY LOWERED FLOOR HEIGHT	LOAD CAPACITY	SHIPPING WEIGHT
LPSD-2160	27'0"	21'0"	7'6"	60"x120"	60"	54"x111"	4'0"	1,200 lb.	6,500 lb.
LPSD-2860	34'0"	28'0"	8'2"	60"x120"	60"	54"x111"	4'8"	800 lb.	7,000 lb.

SLAB TYPE MACHINE SHOULD ONLY BE RAISED ON A HARD FLAT LEVEL SURFACE.

• All models meet applicable OSHA/ANSI Standards as interpreted by LPI, Inc. •

SCISSOR LIFTS / WORK PLATFORMS

Photocopy and
fax to LPI® at:
715-839-8647

COMPANY NAME _____ DATE _____

CONTACT _____ PHONE _____ FAX _____

USER INDUSTRY: AIRCRAFT RAIL TRUCK TRANSIT OFF-ROAD INDUSTRIAL OTHER _____
(please specify)

PRODUCT APPLICATION: 3-Axis Lift for — Painting Blasting 4-Axis Lift
 Scissor Platform for — Track System Self-Propelled Manual
 Custom Designed System Wash Gantry

BOOTH INFORMATION

- Application: Retro-Fit _____ New _____
- Inside dimensions of booth:
Width _____ Height _____ Depth _____
- Booth design:
Down Draft _____ Cross Draft _____ Side Down Draft _____
Dry Filter _____ Water Wash _____
- Does existing booth have hipped ceiling lighting: Yes ___ No ___
If yes, hip size & degree _____
- Does existing booth have corner chambers: Yes _____ No _____
If yes, size _____
- Does existing booth have structure:
Yes, Inside _____ Yes, Outside _____ No _____
Structure size: Vertical _____ Horizontal _____
Distance between vertical supports: _____
- Is booth floor concrete, grating, or combination: _____
- Dimensions of concrete area from booth wall to grating: _____
- Location and type of lights in booth: _____

- Are lights inside access, outside access, or both: _____
- Are there mandors in booth walls: Yes _____ No _____
If yes, where: _____

OPERATION

- Process being performed (i.e. Wash, Paint, Blast): _____

- Number of people doing process at one time: _____
- Cycle time - how many units/hour: _____
- Does operator need to get at ends of object: Yes ___ No ___
- Does operator need breathing air: Yes _____ No _____
- How many paintlines/hoses involved: _____
- Type of paint system (i.e. HVIP, Electrostatic, etc.): _____
- Size of hoses: _____
- Any additional equipment in or on lift: _____

OBJECT

**IMPORTANT: COORDINATE PRODUCT
ORIENTATION WITH BOOTH DIMENSIONS**

- Type of product: _____
- Shape of product (i.e. square, cylinder, etc.) _____
- Largest object:
Width _____ Height _____ Depth _____
- Smallest object:
Width _____ Height _____ Depth _____
- Is product on conveyor, track or monorail: _____
- Location of this conveyor, etc. in booth: _____

- If blast, type of media used: _____
- If wash, type of chemical used: _____

IMPORTANT: Please attach existing
booth print or pencil drawing.



LIFT SYSTEMS

800 Wisconsin Street
Mailbox 10
Eau Claire, WI 54703

www.lpi-inc.com • sales@lpi-inc.com

Toll Free • 800-657-6956