

# Work-Catch Platforms

Safer, adjustable fall protection for manufacturing applications

## Dual Purpose Work/Catch Platforms

Provides large stable work platform for workers and materials, and can be positioned over the leading edge of products to provide fall protection. Variable platform height (53" to 129") and length (10' to 16') allows access to all work areas.



Above: Shown with Rollouts extended on each end, adding an additional 78" of platform length.

Upper Right: Shown with Rollouts in retracted position.



Locking steel swivel casters allow easy positioning and brake provides maximum stability.



### INCREASED SAFETY

- Reduces fatigue and minimizes excessive movement associated with manual lifting.

### AFFORDABLE

- Operates off compressed air source (not included), requires 50 SCFM at 90 psi. Auxiliary air supply connection for tool operation



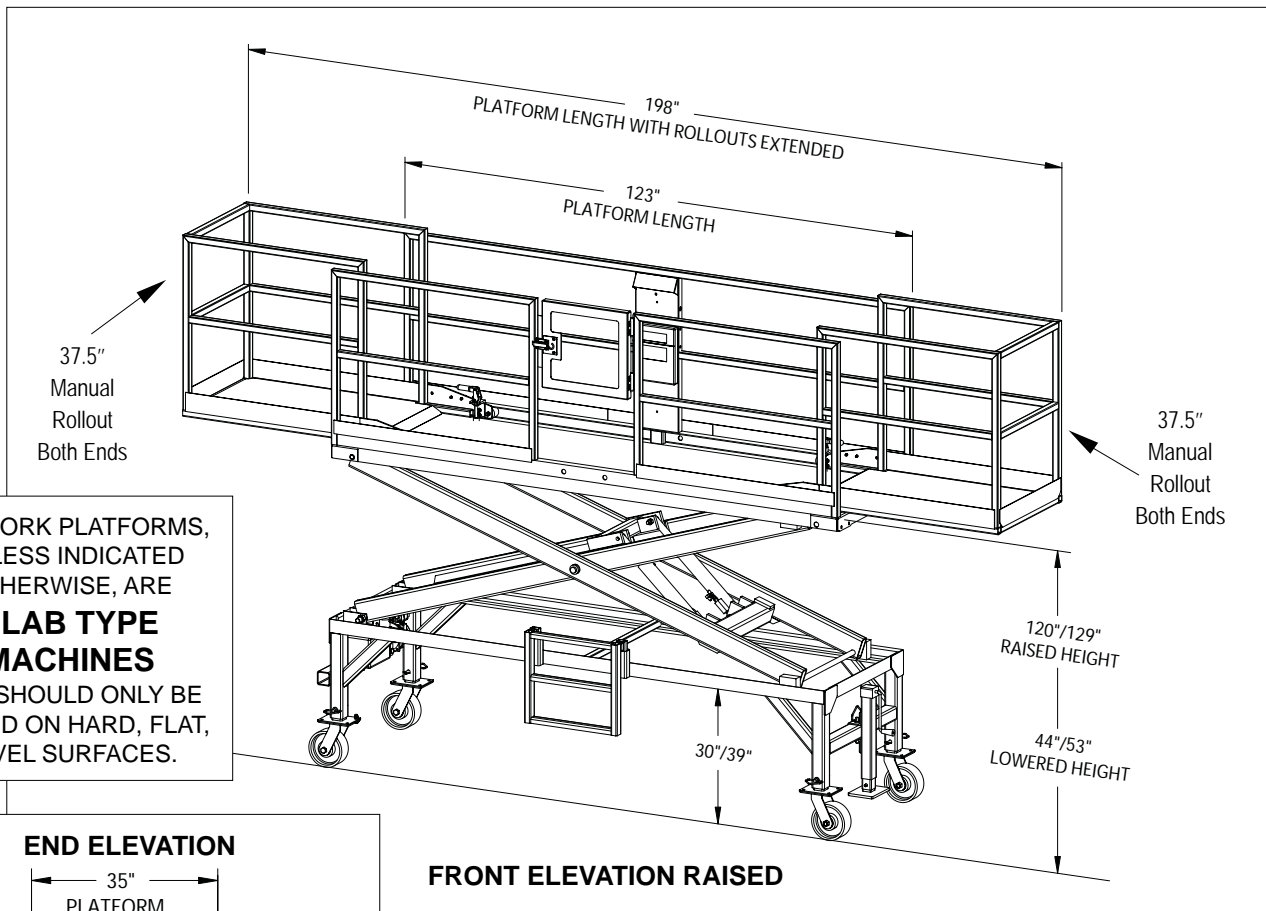
### APPLICATIONS

- Manufacturing
- Material Handling
- Fall Protection
- Maintenance

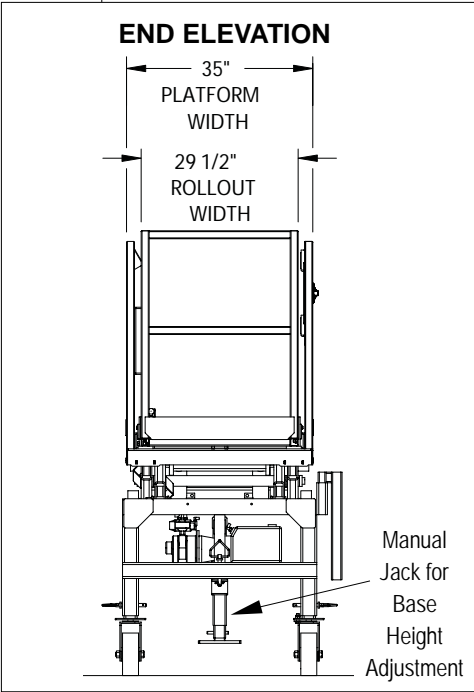
### LIFT TRAVEL SPEED

Up: 15 F.P.M. Down: 15 F.P.M.

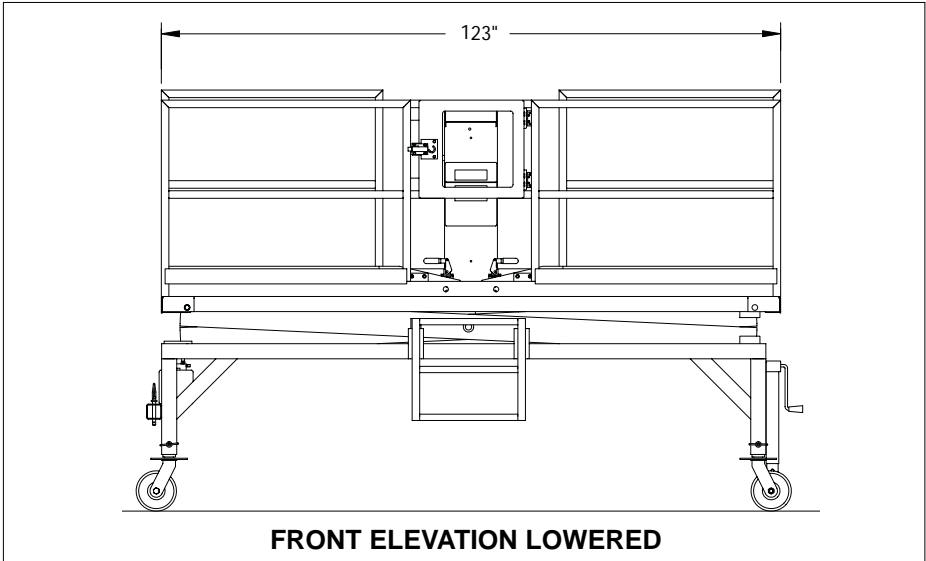
View our website - [www.lpi-inc.com](http://www.lpi-inc.com) for more information on the Work-Catch Platforms or any of our other products. Our engineers will work closely with you to develop a system designed specifically to your application.



ALL WORK PLATFORMS, UNLESS INDICATED OTHERWISE, ARE **SLAB TYPE MACHINES** AND SHOULD ONLY BE RAISED ON HARD, FLAT, LEVEL SURFACES.



**FRONT ELEVATION RAISED**



LPI MODEL NUMBER	MAX. WORKING HEIGHT	MAX. RAISED FLOOR HEIGHT	MIN. LOWERED FLOOR HEIGHT	PLAT-FORM LENGTH*	PLAT-FORM WIDTH	ROLL-OUT WIDTH	PLAT-FORM WEIGHT CAP.**	OVERALL PLAT-FORM WIDTH	RE-TRACTED OVERALL LENGTH	SHIPPING WEIGHT
LPSPH35123120	201"	129"	44"	123"/198" *	35"	29-1/2"	1,500# **	35"	127"	2,000#

\* Platform with Rollouts in retracted / extended position

\*\* 300# maximum capacity on rollout sections

Due to continuous product improvements, we reserve the right to make specification and/or equipment changes without prior notification.



800 Wisconsin Street • Mailbox 10  
 Eau Claire, WI 54703  
 Toll Free: (800) 657-6956  
 Fax: (715) 839-8647  
 Web: [www.lpi-inc.com](http://www.lpi-inc.com) • E-Mail: [sales@lpi-inc.com](mailto:sales@lpi-inc.com)